

# SAKSHAM SSPACS WORKSTATION

ANALOG TO DICOM CONVERSION / TELERADIOLOGY / PRINTING



The complete digital workflow can only be achieved when PACS network has access of each Modality. The integration is seamless for DICOM based Modalities but the problem is to connect Non-DICOM & Analog Imaging Modalities with the PACS server.

SAKSHAM is offering a PC based Acquisition Workstation Software to convert all Non-DICOM & Analog Modalities into DICOM.

## ACQUISITION SUPPORT

- Supports various standard & Non Standard Video Signals like, CT, MR, Ultrasound, Doppler, MG, RF, XA, CR etc.
- Twain Scanning Support for Medical Film Scanners,
- Import from saved video (AVI) JPEG, TIFF & BMP formats
- High Resolution Frame Grabber up to 2048 X 2048 Pixel

## DICOM Post Processing & Manipulation

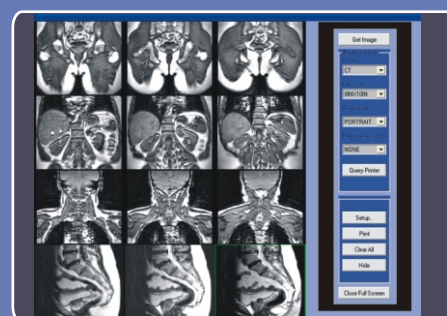
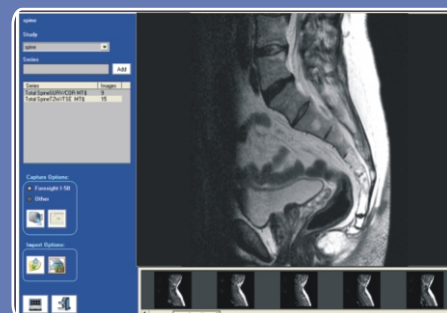
- Interactive Mouse driven & manual Image Stacking .
- Rotate, Flip, Invert and Dynamic Pan/Zoom on Mouse.
- Cine tools along with frame rates control.
- Interactive Window/Level adjustment on Mouse Control.
- Preset Window/Level setup on Keyboard Function Keys.
- User Annotations / Measurements and Image Crop tools.
- Multiple display formats to view 1 to 16 images at a time.
- Complete DICOM header information.
- Export Study to JPEG, DICOM, DICOM-DIR and Copy to Clipboard & save as JPEG & BMP and options.
- DICOM Import from CD, DVD, TAPE & Local Hard Discs.

## Archival, Output & Filming/Printing

- DICOM Study export for creating CD & DVD with single or multiple patient studies.
- Free DICOM Viewer License on each CD/DVD creation.
- DICOM & WINDOWS local/Network Printer support with various Layout and frames.
- Full screen print preview & Interactive Window/Level adjustment on filming window to achieve precise printing.

## Integration & Networking

- Seamless Integration with any DICOM modality & PACS network.
- Supports all DICOM based camera/printer & all PC drivers.
- DICOM Image transfer over Internet, E-Mail, Modem, ISDN, DSL, LAN for creating teleradiology networks.
- JPEG loss-less & JPEG lossy compression to achieve high-speed DICOM image transfer even on slow-speed network conditions.
- All DICOM 3.0 based communication support as follows:
  - DICOM STORAGE (SCU/SCP)
  - DICOM STORAGE COMMITMENT (SCP)
  - DICOM QUERY/RETRIEVE (SCP)



## SAKSHAM SOLUTIONS

Z-1A, Hauz Khas, New Delhi-16

Tel: +91-11-41656978 / 79

Telefax: +91-11-41656980

Mobile: +91-9350845734

E-mail: [info@sakshamsolutions.com](mailto:info@sakshamsolutions.com)

Web: [www.sakshamsolutions.com](http://www.sakshamsolutions.com)